

Setting up the DocuPrint CP225 w printer on a wireless network



Before you begin

Ensure you have the **name of your wireless network (SSID), wireless network password, security and encryption types.**

To find the name and type of security encryption of your wireless network on your computer (example Windows 7):

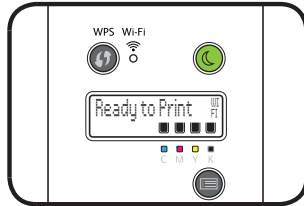
- Go to the Start Menu. Select **Control Panel** and click on **Network and Sharing Centre**.
- Click on **Manage Wireless Networks**. Double click on your preferred wireless network. Note the SSID. Click on the security tab. Note the security and encryption types.

1 WPS-PBC (WPS Button)

Note: WPS-PBC (WPS Button), WPS-PBC (Operator Panel) and WPS-PIN is only available when the wireless access point or router supports WPS-PBC. Please refer to the manual provided with the router.

Before starting WPS-PBC, confirm the position of the WPS button on the wireless access point or router. Please refer to the manual supplied with the router for more information.

- Press the small green **[Energy Saver]** button to wake up the printer.



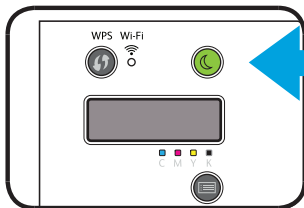
- Press and hold the **[WPS]** button on the printer for three (3) seconds.

Confirm that the Wi-Fi LED starts to blink slowly and **Wi-Fi WPS linking Timeout:[XXX]** appears on the LCD panel.

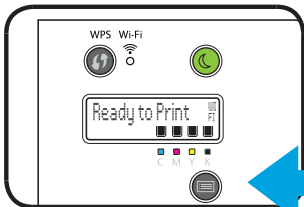
- Start the WPS operation on the wireless access point or router within two (2) minutes. When WPS is successful, the (Wi-Fi) LED lights up. The wireless connection is established and setup for wireless is complete.

2 WPS-PBC (Operator Panel Menu)

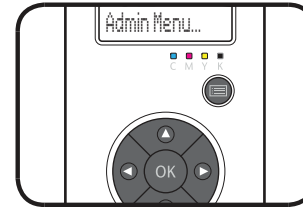
At the Operator Panel:



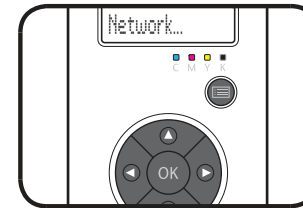
- Press the small green **[Energy Saver]** button to wake up the printer



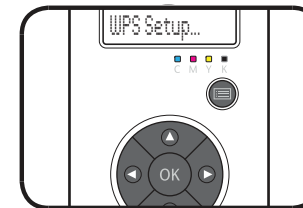
- Press the **[Menu]** button.



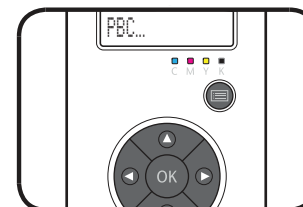
- Use the **[Arrow]** buttons to scroll to the **Admin Menu** and press **[OK]**.



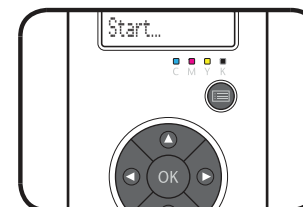
- Scroll to **Network** and press **[OK]**.



- Scroll to **WPS Setup** and press **[OK]**.



- Scroll to **PBC** and press **[OK]**.



- Scroll to **Start** and press **[OK]**.

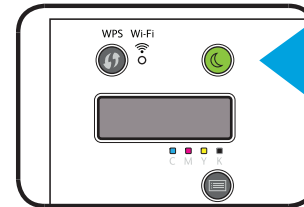
Confirm that the Wi-Fi LED starts to blink slowly and **Wi-Fi WPS linking Timeout:[XXX]** appears on the LCD panel.

Start the WPS operation on the wireless access point or router within two (2) minutes. When WPS is successful, the (Wi-Fi) LED lights up. The wireless connection is established and setup for wireless is complete.

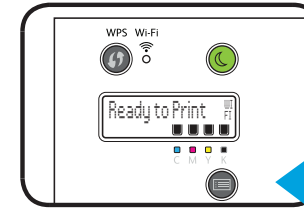
3 WPS-PIN

Note: The WPS-PIN option requires users to login to the router to add the PIN Code. Please refer to the manual provided with the router. If too long is taken to enter the PIN Code into the router a timeout error may occur.

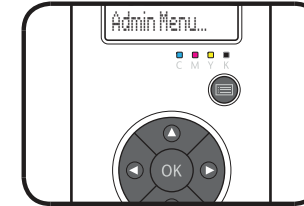
At the Operator Panel:



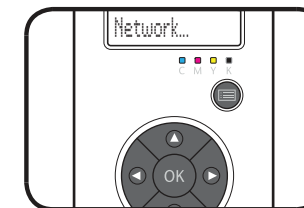
- Press the small green **[Energy Saver]** button to wake up the printer.



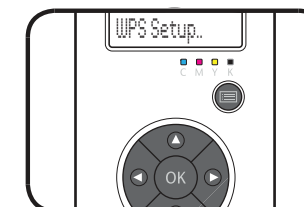
- Press the **[Menu]** button.



- Scroll to **Admin Menu** and press **[OK]**.

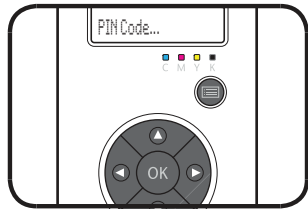


- Scroll to **Network** and press **[OK]**.



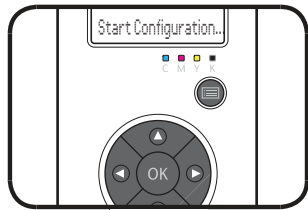
- Scroll to **WPS Setup** and press **[OK]**.

3 WPS-PIN continued...



6 Scroll to **PIN Code** and press **[OK]**.

7 Write down the displayed 8-digit PIN code or scroll to **Print PIN Code**, and press **[OK]**. The PIN Code will print.
Note: If PIN Code is printed, please repeat process from Step 2.



8 Scroll to **Start Configuration** and press **[OK]**.

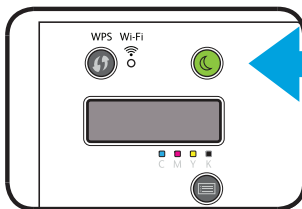
9 Select the name of the wireless network or **SSID** and press **[OK]**.

10 Confirm that **WPS linking Timeout:[XXX]** appears on the LCD panel, and enter the PIN code displayed in **Step 7** into the wireless LAN access point within 2 (two) minutes. Please refer to the manual provided with the router. If too long is taken to enter the PIN Code a timeout error may occur.

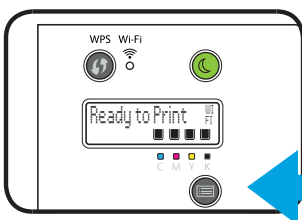
When WPS is successful, the (Wi-Fi) LED lights up. The wireless connection is established and setup for wireless is complete.

4 Auto SSID Setup

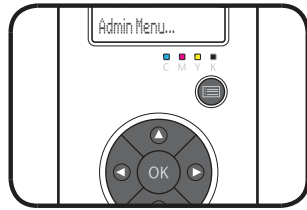
At the Operator Panel:



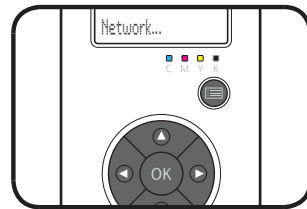
1 Press the small green **[Energy Saver]** button to wake up the printer



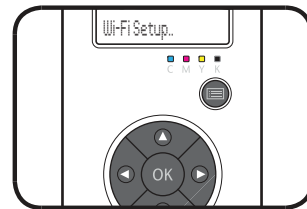
2 Press the **[Menu]** button.



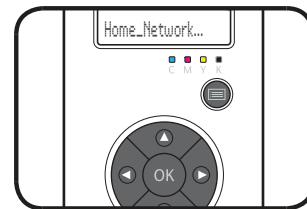
3 Scroll to **Admin Menu** and press **[OK]**.



4 Scroll to **Network** and press **[OK]**.

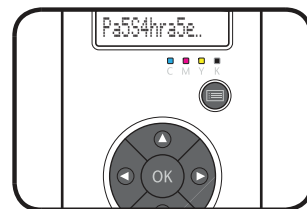


5 Scroll to **Wi-Fi Setup** and press **[OK]**. The printer automatically searches the access points on the network.



6 Select the required access point and press **[OK]**.

Note: Some hidden SSID may not be displayed. If the SSID is not detected, turn on SSID broadcast from the access point or router. Please refer to the manual of the access point or router.



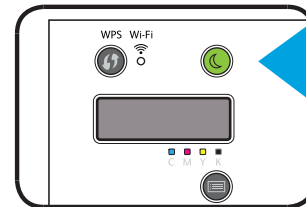
7 Enter the **passphrase** or **WEP key** and press **[OK]**.

Note: When the encryption type of the access point is WPA2 or Mixed: Enter the PASSPHRASE and then press **OK**. When the encryption type of the access point is WEP: Enter the WEP key and then press **OK**.

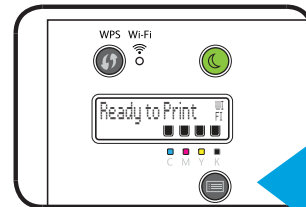
When the Auto SSID Setup is successful, the (Wi-Fi) LED lights up. The wireless connection is established and setup for wireless LAN is complete.

5 Manual SSID Setup

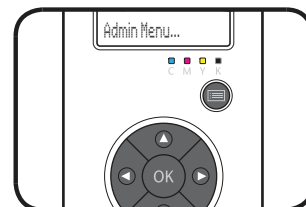
At the Operator Panel:



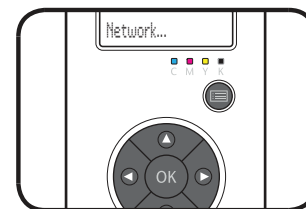
1 Press the small green **[Energy Saver]** button to wake up the printer



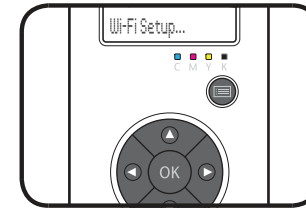
2 Press the **[Menu]** button.



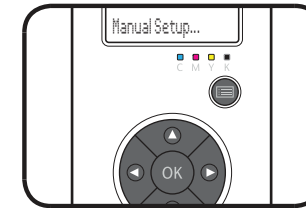
3 Scroll to **Admin Menu** and press **[OK]**.



4 Scroll to **Network** and press **[OK]**.



5 Scroll to **Wi-Fi Setup** and press **[OK]**.



6 Scroll to **Manual Setup** and press **[OK]**.

7 Enter the **SSID**, and press **[OK]**.

8 Select the network mode from **Infrastructure** and **Ad-hoc** depending upon your environment, and then press **[OK]**.

If you select **Infrastructure**, proceed to **Step 9**.
If you select **Ad-hoc**, proceed to **Step 10**.

9 Select the encryption type from **Mixed Mode PSK**, **WPA2-PSK-AES** or **WEP**.

IMPORTANT: Be sure to use one of the supported encryption types to protect your network traffic

Mixed Mode PSK or WPA2-PSK-AES
a) Select encryption type, then press **[OK]**
b) Enter the passphrase, then press **[OK]**

WEP
a) Select encryption type, then press **[OK]**
b) Enter the WEP key, then press **[OK]**
c) Select the desired transmit key from **Auto**, **WEP key 1** to **WEP key 4**, then press **[OK]**.

10 Select **WEP** for the encryption type.

11 Enter the **WEP key**, then press **OK**.

12 Select the desired transmit key from **WEP key 1** to **WEP key 4**, then press **OK**.

When the Manual SSID Setup is successful, the (Wi-Fi) LED lights up. The wireless connection is established and setup for wireless LAN is complete.